

The Sheraton Chicago Hotel & Towers welcomes you to the heart of the city. Located on the Chicago Riverwalk, the hotel puts you within walking distance to Navy Pier, Millennium Park, Michigan Avenue shopping, the Art Institute and the Loop District. Celebrating over 20 years of award winning luxury service with premier convention space, the Sheraton Chicago boasts one of the largest ballrooms in the Midwest.

At the Sheraton Chicago, you'll find something to indulge your taste from five distinctive restaurants and lounges to satisfy every appetite. Relax and unwind in our fully equipped complimentary Sheraton Fitness Center featuring an indoor heated pool, dry sauna and sun deck.

For vacations, business trips or meetings, the Sheraton Chicago puts the entire city at your doorstep.



Sheraton
Chicago
HOTEL & TOWERS

GUEST ROOM INFORMATION

- 1,209 guest rooms with 40 suites
- Each room with a view of the Chicago River, Lake Michigan or the City Skyline
- Sheraton Sweet Sleeper Bed®
- Coffee Maker with Starbucks Coffee®
- 32" Flat Screen TV
- Safe
- Iron & Ironing Board
- Hair Dryer
- Wireless Internet (charges apply)
- In-room Refreshment Center
- Accessible Rooms Available

GUEST SERVICES & AMENITIES

- FedEx Office Business Center
- Full Service Concierge & Bellmen
- Valet & Self Parking
- Interactive Digital Signage
- Dry Cleaning Services

RECREATION

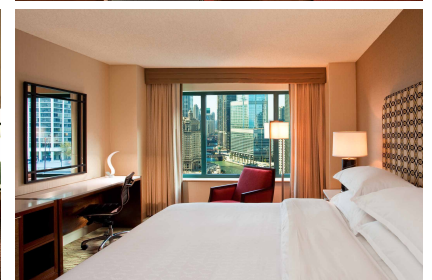
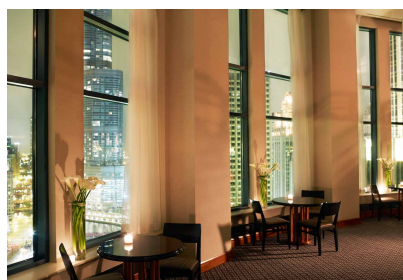
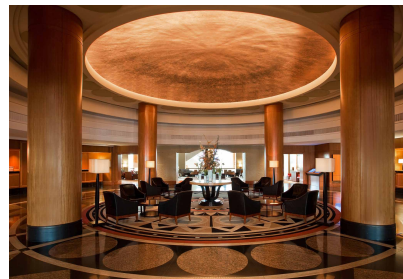
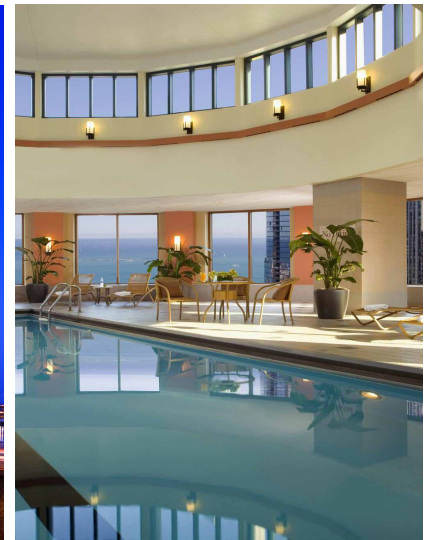
- Sheraton Fitness Center
- Indoor Heated Pool
- Sun Deck
- Dry Sauna
- Jogging & Bicycling along Lake Michigan

CONFERENCE FACILITIES

- 120,000 sq. ft. of Meeting Space
- 34 Breakout Meeting Rooms
- 40,000 sq. ft. Sheraton Chicago Ballroom, accommodates up to 4,600 people
- 35,000 sq. ft. River Exhibition Hall
- Four above ground levels of Meeting Space

RESTAURANTS & LOUNGES

- Shula's Steak House
- LB Bistro and Patisserie
- Java Bar
- Chicago Burger Company
- The Link @ Sheraton Cafe



MEETING ROOM	TOTAL AREA	DIMENSIONS	BANQUET	THEATER	RECEPTION	CLASSROOM
--------------	------------	------------	---------	---------	-----------	-----------

BALLROOM - LEVEL 4

Sheraton Chicago Ballroom	40,000	129' x 314'	3,270	4,200	4,600	2,400
Sheraton Ballroom I	1,953	31' x 63'	150	180	200	140
Sheraton Ballroom II	2,706	41' x 63'	200	280	280	160
Sheraton Ballroom III	2,775	42' x 63'	200	280	280	160
Sheraton Ballroom IV	4,875	63' x 78'	300	480	500	240
Sheraton Ballroom V	4,875	63' x 78'	300	480	500	240
Chicago Ballroom VI	4,875	63' x 78'	350	480	500	240
Chicago Ballroom VII	4,875	63' x 78'	350	480	500	240
Chicago Ballroom VIII	2,772	42' x 66'	200	280	280	120
Chicago Ballroom IX	2,706	41' x 66'	200	280	280	120
Chicago Ballroom X	2,772	42' x 66'	200	280	280	150
Ballroom Promenade	13,000	50' x 260'	n/a	n/a	1,500	n/a
Ballroom Office	570	15' x 38'	n/a	n/a	n/a	n/a

MEETING ROOM	TOTAL AREA	DIMENSIONS	BANQUET	THEATER	CONFERENCE	CLASSROOM	U-SHAPE
--------------	------------	------------	---------	---------	------------	-----------	---------

LOBBY - LEVEL 3

Parlor A	400	25' x 16'	30	30	20	18	15
Parlor B	324	18' x 18'	30	30	16	18	15
Parlor C	1,170	45' x 26'	70	100	34	60	35
Parlor D	399	21' x 19'	20	30	16	18	15
Parlor E	414	23' x 18'	30	40	20	18	15
Parlor F	432	24' x 18'	30	40	20	24	21
Parlor G	380	20' x 19'	30	40	16	18	18
Lincoln Boardroom	720	30' x 24'	n/a	n/a	20	n/a	n/a
Columbus A	600	25' x 24'	40	40	16	24	15
Columbus B	600	25' x 24'	40	40	16	24	15
Columbus A&B	1,200	50' x 24'	80	80	40	48	30
ChiBar Waterfront Venue	2,000	30' x 65'	90	n/a	n/a	n/a	n/a

MEETING ROOMS - LEVEL 2

Huron	1,014	26' x 39'	60	90	30	51	30
Ontario	1,032	24' x 43'	70	100	39	54	30
Erie	1,222	26' x 47'	70	110	39	57	36
Superior	2,082	49' x 45'	140	200	42	108	45
Superior A	990	22' x 45'	70	100	28	54	32
Superior B	1,092	26' x 42'	70	100	28	54	32
Michigan	2,442	57' x 45'	160	220	44	150	50
Michigan A	1,092	26' x 42'	70	100	32	60	32
Michigan B	1,350	30' x 45'	80	110	34	60	32
Ohio	900	25' x 36'	50	80	36	45	27
Mississippi	900	25' x 36'	50	80	36	45	27
Arkansas	825	25' x 33'	50	80	26	45	26
Colorado	825	25' x 33'	50	80	26	45	26
Missouri	972	27' x 36'	50	80	34	45	27
Mayfair	1,560	39' x 40'	80	100	30	60	32
Illinois Boardroom	700	27' x 36'	n/a	n/a	18	n/a	n/a
Tennessee	429	16.5' x 26'	40	40	24	30	21

MEETING ROOM	TOTAL AREA	DIMENSIONS	BANQUET	RECEPTION	8' X 10'	10' X 10' BOOTH
--------------	------------	------------	---------	-----------	----------	-----------------

RIVER EXHIBITION HALL - LEVEL 1

River Exhibition Hall	35,000	274' x 151'	2,150	3,200	175	133
River Exhibition Hall A	16,262	131' x 106'	1,010	1,600	84	65
River Exhibition Hall B	18,738	149' x 168'	1,200	1,600	89	59
River Exhibition Hall Promenade	6,000	n/a	n/a	n/a	n/a	n/a